

SUMMER

— S T Y L E —

GREAT SAVINGS ON
**KITCHENS,
BEDROOMS &
APPLIANCES**

*Natural***Style**

Kick start your planning
with our new product
launch

ROOM FOR AN ISLAND?

Some key points about fitting an
island into your new scheme



MAKE GREAT SAVINGS WITH THE

SUMMER

SALE



SAVE ON KITCHENS



SAVE ON FITTED BEDROOMS



SAVE ON ACCESSORIES & APPLIANCES

SPREAD THE COST OF YOUR *dream*
KITCHEN OR BEDROOM

BUY NOW **PAY 2019***

Buy now and pay in 12 months, after 12 months,
choose to pay in full with a £99 admin fee.

24.9% Representative APR, if the balance is not paid in full.

*Terms & Conditions apply. Please ask in store for details. **Authorised and regulated by the Financial Conduct Authority.***Sigma 3 Kitchens Ltd, Llantrisant Business Park, Llantrisant, South Wales, CF72 8LF act as a credit broker and only offers products from Barclays Partner Finance. Barclays Partner Finance is a trading name of Clydesdale Financial Services Limited a wholly owned subsidiary of Barclays Bank PLC. Clydesdale Financial Services Limited is authorised and regulated by the Financial Conduct Authority (Financial Services Register Number: 311753). Registered in England. Registered No. 2901725. Registered Office: 1 Churchill Place, London, E14 5HP.

WHAT'S NEW

Sutton Highland Stone with Farringdon Grey



H LINE Larna Graphite

NATURAL STYLE

Introducing our newest launch. We are always striving to be at the forefront of innovation and offer unique products that set us apart from the competition and this product launch is no different.

Our newest range, colours and finishes offers a stylish response to the most exciting new trends in interior design, combining tactile textures with a très chic neutral and warming colour palette. Accessorize your kitchen with wonderful internal storage, such as our new bin system, or put your favourite items on display with our new plate storage insert. Perfect for the classic kitchen design.

What's new?

- New Larna range for Masterclass and H Line
- The warm colour palette - 5 new colours for Sutton
- Two new finishes for Deco
- Two new silk painted colours
- Two new timber painted colours
- New cabinet colour
- New plate storage insert
- Additions to our Premier Handles collection
- Brand new pull out bin system
- Two new 54mm block end panel finishes





Larna Graphite with Light Grey and Madoc Tuscan Walnut

A stylish response to the most exciting new trends in interior design.

Hampton Farrington Grey with Mulberry



H LINE Deco Copper Oxide with Hampton Highland Stone and matching handle rail



H LINE Hampton Highland Stone with Stone Grey handle rail

H LINE Deco Silver Oxide with Hampton Scots Grey and Graphite handle rail



DO I HAVE ROOM *for a* KITCHEN ISLAND?



The addition of a kitchen island can enhance your kitchen in many different ways, and, with clever planning, smaller kitchens can benefit too.

We have put together some tips to help you decipher whether you have enough space to make an island work for you. After all, a well-planned layout offers much enjoyment.

One size doesn't fit all

If your kitchen space is small then don't automatically rule out the possibility of an island. There are many options for making an island work best for you, even if your space is limited. We offer over 14,000 different cabinet options, which means that we can tailor a design to suit your specific needs.

Determine your space

Factors to be considered when an island is wanted are how many people live there and how will they use the space? The very first thing that will be needed is the room dimensions. Your designer will need to determine how much space will be left after the main cabinets are in position. The space between the cabinets and wall or other cabinets will allow the designer to conclude if an island is possible.

Safety first

Making sure there is enough space around your island is vital. Your designer will ensure that all doors, drawers, ovens and dishwashers can be opened safely without any obstruction. The biggest trip hazard is always the dishwasher as it has a door which opens downwards.



Chatsworth Light Grey. Designed by Dan Thomas in Cardiff (West)

A small island for a small kitchen

All islands vary in size and shape, but the minimum size that we recommend for a kitchen island is 1000mm x 1000mm. This will still create a practical working island. The minimal amount of space required around this island would be roughly 900mm. The distance would only really be suitable for one person to work in the kitchen. The more people you include would leave the space feeling cramped.



Roma White with Tuscan Walnut. Designed by Olly Howard in Esher



Chatsworth Light Grey.
Designed by Ollie Willcox in Esher

Proportions

We have gathered that an island size is determined by the room around it, so it makes sense that the larger your room, the larger your island can be. Incorporating something too large for your space can easily spoil the look and feel of your scheme.

Maximise your workspace

An island planned as a multi functional workspace can be an extremely efficient addition to your kitchen. Consider seating, storage, hob and extractor and of course, work surface space. Planned correctly, these can fit onto the smallest of islands.



Chatsworth Scots Grey with Marlborough Graphite.
Designed by Beth Zeraschi in Culverhouse Cross



Galley style

Typically, Chefs prefer to work in a galley kitchen as it allows them to stand at the island but turn and reach the workspace behind. A well planned design will have easy access to all work surfaces, cupboards and appliances.

Peninsula living

If you don't have the space for a full island then consider a kitchen peninsula. It boasts many of the same characteristics as an island, but instead is fixed on one side. A peninsula in a smaller kitchen still works practically but takes up less valuable floor space.

H Line Lumina Mussel. Designed by Becky Grant in Swansea

QUALITY, SERVICE *and* VALUE

We've been making kitchens for over 43 years now and built a reputation for the quality of our kitchens and our installations. You can rest assured when you buy a Sigma 3 kitchen.



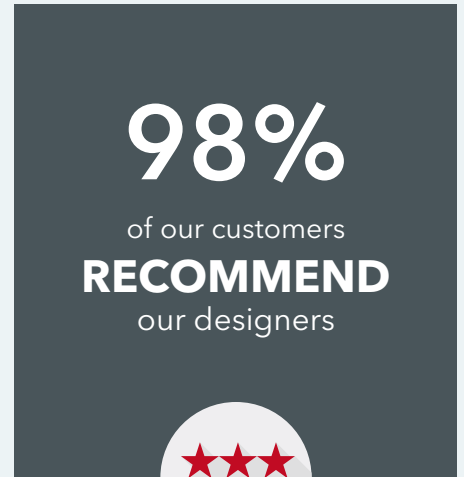
Affordable Kitchens

Kitchens to suit every budget



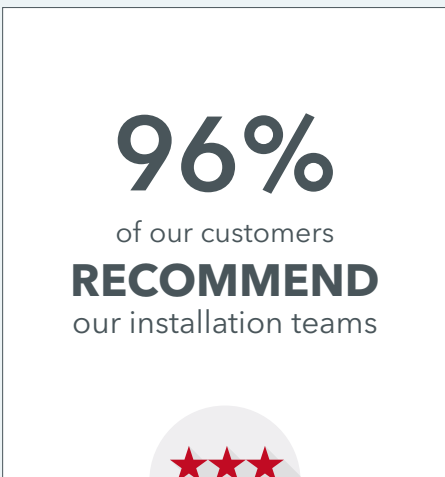
Choice

Over 400 doors and 16 different cabinet options to choose from



Expert Designers

Recommended by 98% of customers



Experienced Installation

Recommended by 96% of customers



Beautiful Showrooms

Eight Kitchen and Bedroom showrooms



One Kitchen to Love

We hope you have many years of enjoyment out of your Sigma 3 Kitchen



GET THE LOOK

GET THE *vibrant* LOOK

From the super modern handleless kitchen to a dark and moody classic scheme, find out how to achieve this years must have looks.

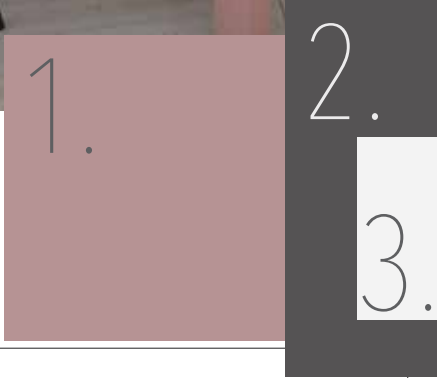


GET THE LOOK

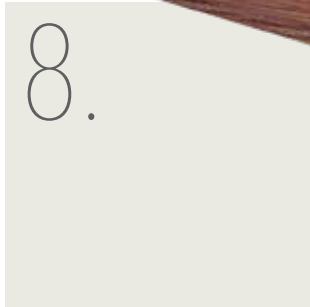


Pretty in **Pink**

SOLVA VINTAGE
ROSE, GRAPHITE
AND SCOTS GREY



Get the look
 1. Solva Vintage Rose 2. Solva Graphite 3. Solva Scots Grey 4. Brooklyn Vintage Giant Lampshade 5. Silestone Snowy Ibiza silestone.co.uk 6. Bloomingville Marble Cutting Board with Leather Strap bloomingville.us 7. Walnut Board 8. Farrow and Ball All White farrow-ball.co.uk 9. John Lewis Calia Bar Stool johnlewis.com 10. Mandarin Stone Scandi White mandarinstone.com



GET THE LOOK

Spring Meadow Accents

HAMPTON SPRING MEADOW
WITH DUST GREY AND MADOC
BORDER OAK



1.

2.

3.



4.



5.



7.

Get the look
 1. Hampton Spring Meadow 2. Hampton Dust Grey 3. Madoc Border Oak 4. Dekton Korus dekton.co.uk 5. Amp Lamp Golden Green normann-copenhagen.com 6. Matte black cuckoo clock 7. Day Birger et Mikkelsen Ceramic Butterfly Vase 8. Enamel Bread bin 9. Industrial Oak Bar Stool hutch.co.uk



6.



8.



9.

GET THE LOOK



Three is the magic number

ROMA TERRACOTTA SUNSET WITH SCOTS GREY AND OXFORD BLUE.





1.

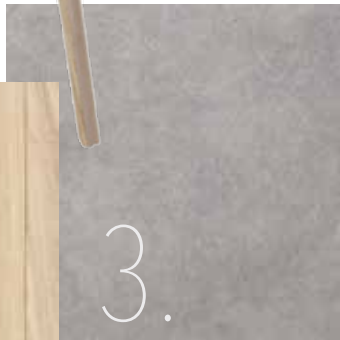
4.

5.

6.



2.



3.



7.



Get the look

1. Hay About A Stool hay.dk 2. Element 7 Ivory Oak element7.co.uk 3. Quiet Numb Tiles 4. Roma Oxford Blue 5. Roma Scots Grey 6. Roma Terracotta Sunset 7. Ferm Living Plant Box in Dark Grey 8. Jansen+co Terra Casserole Dish 9. Ferm Living Buckle Jar in Rust



8.



9.

Neff MasterPartner®

We understand that the kitchen is the heart of every home, a place to meet, eat and get creative. Therefore, we can offer efficient, high quality products that meet the demands of every lifestyle.

As a Neff MasterPartner® you will benefit from exclusive Neff promotions, live cooking demonstrations, a premium display of Neff appliances and staff that have been fully trained on all Neff appliances to offer you the best possible service.



A great showroom experience

We have an extensive range of fully functional Neff appliances as part of our inspiring displays for you to experience in our showrooms. Our designers will be on hand to show you their benefits.



Expert knowledge

All our designers and installation staff have received extensive training from Neff on how to get the best out of your appliances. We also have experience - we've been supplying Neff appliances for over 20 years.



Added extras

By purchasing from a Neff MasterPartner®, you will receive a special Welcome Pack full of goodies to accessorise your appliances. We also regularly run exclusive offers on Neff appliances.

Ovens, Compact & Combi Ovens



Hobs



Steam Ovens & Compact Steam Ovens



Warming Drawers



Fridge/Freezers



Dishwashers



Extractor Hoods



Laundry



Built-In Coffee Machines





PANCAKES WITH CINNAMON BUTTER



INGREDIENTS

- 4 tsp butter
- 2 tsp brown sugar
- ½ tsp cinnamon
- 200 g plain flour
- 200 ml milk
- 100 g sugar
- 1 tsp baking powder
- 2 eggs
- 1 tbsp oil
- Pinch of salt

INSTRUCTIONS

1. Melt butter in the microwave on low power (180 Watts 1-2 minutes). Add sugar and cinnamon and stir well. Allow to cool down.
2. Preheat a small, non-stick pan. Mix pancake dough and pour into the pan.
3. Fill cinnamon butter in a piping bag and create snail-style circles on the pancake while it's baking. If necessary, cover the pan with a plate.
4. Flip the pancake with a spatula and bake until it is golden-brown on both sides.
5. Spoon the remaining cinnamon butter on the pancakes and garnish with fruit of the season.
6. Idea: this is a simple recipe for children. They can assist with mixing the pancake dough, spooning on the cinnamon butter and garnishing.



COOKING PASSION SINCE 1877



LIGHTER MASSAMAN CHICKEN



A whole chicken, basted with an easy homemade massaman paste and baked in the oven with new potatoes, peppers, spinach and light coconut milk. Serve with extra greens and cashews for a lighter spin on traditional massaman curry.

Serves: 4-5

Preparation time: 15 minutes

Cooking time: 90 minutes

INGREDIENTS

MASSAMAN PASTE:

- 1 chopped red onion
- 3 red chillies, seeds removed, roughly chopped
- 1 tsp paprika
- 2 tsp ground coriander
- 2 tsp cumin
- 1/2 tsp ground cinnamon
- 1/2 tsp white pepper
- 3 cloves garlic peeled and minced
- 2 tsp lemongrass paste
- 5 cm piece ginger peeled and minced
- 3 tsp fish sauce
- 1 tsp brown sugar
- Small bunch fresh coriander
- 1/2 tsp salt
- 1 tbsp vegetable oil

CHICKEN:

- Medium whole chicken weighing approx. 1.5kg
- 1 lime, chopped in half
- 400g baby new potatoes
- 200ml chicken stock
- 1 red pepper, deseeded and sliced
- 1 yellow pepper, deseeded and sliced
- Juice of 1 lime
- 100g baby leaf spinach
- 400ml can of lighter/low fat coconut milk

SPRING GREENS:

- 3 tbsp cashew nuts, roughly chopped
- 2 tbsp unsalted butter
- 2 garlic cloves peeled and minced
- 1 head of spring greens sliced
- pinch of salt and black pepper

Also:

1 tsp chilli flakes

Small bunch fresh coriander, roughly chopped

Boiled rice



COOKING PASSION SINCE 1877

INSTRUCTIONS

1. Preheat the oven to CircoTherm® 170°C.
2. Start with the massaman paste - place all of the paste ingredients into a food processor and pulse until it forms a paste. Set aside.
3. Place the chicken in a large roasting tin or cast iron pan (with enough room around the chicken to hold the potatoes and peppers later). Place the two halves of lime inside the chicken cavity and tie the legs together with string.
4. Spoon half of the curry paste all over the chicken. Place the chicken in the oven and cook with added medium steam for 40 minutes.
5. After 40 minutes, baste the chicken, then add the potatoes to the pan. Move the potatoes around to cover them in any chicken juices, and place back in the oven for 20 minutes.
6. After the 20 minutes, add the remaining curry paste, stock, peppers, and half the lime juice to the pan. Move around the vegetables to cover in the sauce and place back in the oven. Turn off the steam setting and cook for a further 15 minutes.
7. Take out of the oven, check that the chicken is cooked throughout* and stir in the spinach and coconut milk. Place back in the oven for a final 10 minutes to heat through the coconut milk (don't let it boil or it may split). Remove from the oven and allow to rest for 10 minutes. Test the sauce for seasoning, and add a little salt, pepper and more lime juice if needed.
8. Whilst the chicken is resting, cook the spring greens. Heat a frying pan on a medium heat. Add the cashews and toast for a minute or two until lightly brown, then remove from the pan. Melt the butter in the pan over a medium heat, add the garlic and cook for one minute, then add the spring greens, salt and pepper, and toss through the butter for 2-3 minutes until the spring greens are shiny and wilted. Transfer to a serving dish and sprinkle on the toasted cashews.
9. When the chicken has rested, sprinkle on chilli flakes and fresh coriander**. Serve with the spring greens and boiled rice.

* You can check the chicken is cooked by piercing the thickest part of the thigh and checking it's no longer pink. If it's still pink, continue to cook, checking every 10 minutes.

** Serve from the baking dish or transfer to a serving plate with the vegetables and sauce served around the chicken if you prefer.

THE *classic* MOJITO



“ Irresistibly fresh and punchy ”

Ingredients

- 2/3 cup of Cuban white rum
- 1/2 cup fresh lime juice
- 22 mint leaves
- 4tsp white cane sugar
- Ice cubes as necessary
- Soda water

Method

1. Grind the mint leaves with the sugar and lime juice and pour into the glasses
2. Add a splash of soda and pour the ice into the blender
3. Crush the ice to the desired consistency
4. Pour the crushed ice into the glasses. Pour the rum and top off with more soda
5. Decorate with mint leaves and slices of lime

THINK YOU HAVEN'T GOT *space* FOR A HOME BAR?

In modern kitchen design the home bar has been swapped in favour of breakfast bars and islands. We love to use these as a perch whilst sipping our favourite tippie. But, what is better than serving your favourite cocktails from your own drinks mixing station?!



Work your kitchen harder

Give your kitchen the ability to work in several ways. By day, meal preparation; by night, a beautiful bar! Open shelving and wine racks allow you to showcase your favourite bottles, glasses and ornaments. This means that the bar is always going to be open!



Expect the unexpected

Conceal your bar away in a kitchen cupboard and wow your friends by unveiling your pride and joy. The addition of a mirrored back panel and internal lighting creates an even more luxurious feel.

OUR *real* KITCHENS

Our real kitchens speak for themselves. They are designed and installed by our team of highly qualified designers and fitters. Our wealth of knowledge helps make your dream a shining reality.



Ashbourne Lava
Designed by Lisa Foggan in Colchester Avenue



Sutton Silk Graphite with Lumina Light Grey Gloss
Designed by Martyn Harris in Culverhouse Cross



H Line Lumina Mussel with Stone Grey
Designed by Becky Grant in Swansea



Chatsworth Light Grey with White
Designed by Beth Zeraschi in Culverhouse Cross



Luna Stone Grey with Madoc Mayfield Oak
Designed by Ollie Willcox in Esher



Chatsworth Light Grey with Dust Grey
Designed by Anthony Riley in Worthing



Lumina Light Grey with Madoc Manhattan
Designed by Alice Vaatstra in Culverhouse Cross



Maine Light Grey Grained
Designed by Ceri Evans in Swansea

OUR CUSTOMERS *love* US



Excellent **9.8** from 0-10



Job well done

EMU - 10/04/2018

Despite disruptions due to adverse weather my kitchen was still delivered on time. The individual tradesmen were all excellent and ensured their elements were completed so as not to delay other trades. The work was done to a high standard and the guys were all hardworking, reliable, polite, clean and tidy. A special thanks to Andy, the fitter for his cheery disposition and his singing! Thanks also to Dave and James for their work on design and project management. I am delighted with the finished kitchen and have no hesitation recommending the product or the installation team. Excellent work all round.



Fantastic kitchen and customer service

Georgina Williams - 09/04/2018

We are very pleased with our sigma kitchen which has been recently installed. The whole experience from the design, installation and after care has been outstanding it's nice to know that there are companies that pride themselves in providing good customer service and an excellent product.

Martyn Harris who designed our kitchen (Culverhouse Cross Cardiff) is passionate and knowledgeable about the kitchens. Nigel and his team of fitters did a great job of fitting the kitchen. Craig Mayor (manager) visited to check measurements and after installations to check that we were happy and sort out minor problems, again offering great customer service.



Very satisfied customer

Paul Flack - 09/04/2018

Excellent consultation, great design service, friendly and helpful service throughout with seamless installation. We are delighted with our kitchen, strongly recommend.



First class service

Martyn Giddy - 09/04/2018

First class service from design stage to final installation would highly recommend if you are in the market for a top quality kitchen.



Excellent kitchen

Gerallt - 05/04/2018

I was recommended to Sigma 3 by a friend - the whole process of developing the design with Dean was excellent; he made sure that he understood my requirements before producing the initial design and was happy to adapt this proposal to incorporate my feedback. At various points during the process he provided valuable input based on his own experience. The installation was completed on schedule and to a high standard. I'm very pleased with the end result, to the point that I was struggling to think of anything that I would change when asked by a friend (which I know from experience working in the design industry is a difficult thing to achieve!)



Excellent service & a great new kitchen

Mrs Conway 08/04/2018

This is the second kitchen we have had from Sigma3, when we moved house we knew we'd go back to them for a quote and they were great. The team were really helpful in working with our ideas, suggesting options and also looking at alternatives to work within our budget. I have recommended them to friends in the past and would do so again. I would also mention the kitchen fitters that they use - Charles and Paul - they are brilliant! Attention to detail and level of service is second to none.



We are delighted with our kitchen from Sigma 3

Alison Hanna - 04/05/2018

We are very happy with the service we have received from all at Sigma3 on Colchester Avenue. We bought a kitchen from them 5 years ago and when we bought a new house we had no reservations about using them again. The service we received from Lisa and Jamie was fantastic. They were quick to respond to any queries and were very patient with us when we were struggling to make decisions or making changes to our plans. We are absolutely delighted with the design and functionality of our kitchen and would have no hesitations about recommending them.

Thank you!



Top Customer Service

Sarah Lowe - 09/05/2018

I had a Sigma 3 kitchen fitted 18 months ago and am really pleased with it. Unfortunately we had a water leak in the kitchen recently and the plumber needed to access the wall behind my tall larder unit in order to fix it. I called our kitchen designer Gavin at Sigma 3 in Culverhouse Cross and within a few hours, a kitchen fitter arrived to move my tall units. The leak was fixed and the fitter returned the next day to put it all back. Top customer service!



Excellent Choice

Katharine Fairhurst - 07/05/2018

We have absolutely no hesitation in recommending Sigma 3 Kitchens. The quality of the product is excellent, the range of unit sizes and designs has meant that we have been able to use every bit of space and it was helpful that we could always find an example in the showroom to see how the units and features would work. Our thanks go to all the team in the Colchester Road branch in Cardiff who helped to make a major project so easy and stress free but above all we must commend our Design Consultant, Lisa Foggan. She worked tirelessly to make sure that we got a kitchen that not only looks great but functions superbly. Nothing was too much trouble, she gave us a lot of ideas that we have incorporated into our kitchen and her experience was invaluable as she foresaw a few issues that we would need to address and that gave us plenty of time to make appropriate decisions. Apart from anything else her welcoming and friendly manner made it a pleasure to work with her. Thanks also to Dawn for looking after us so well, making sure we were always offered a cup of coffee whenever we attended the showroom. The added bonus was a chance to visit the factory in Llantrisant to see how the kitchens are made. Katharine and Stephen Fairhurst



The Complete Kitchen

John Wilkins 06/05/2018

The guidance, advice and service were very good indeed. The company willingly listened to our needs and provided the professional service to meet our requests. The kitchen was completed to a very high standard and we enjoy the environment created. We are more than happy to recommend Sigma 3 Kitchens to prospective customers



Being new to the area we weren't quite certain which company to choose

Peter Evans 04/05/2018

Being new to this area we weren't quite certain which company to choose. However we wanted to use local suppliers who had a showroom in town. We didn't make a mistake! The design, service and construction support from Emma, Stuart and Nigel were first class. They listened carefully to our ideas and made design suggestions which helped us get the kitchen we wanted. Chris and Jason work very hard at a time when the weather was particularly difficult. Wherever there was a slight problem it was soon and efficiently sorted.



This is the second time we've used...

Elaine Donnelly - 03/05/2018

This is the second time we've used County Bedrooms and Kitchens. We previously had bedroom furniture fitted into a loft extension. We have since moved and we're so impressed by the design, workmanship & customer service from the Worthing Shop we decided to ask them to design our bedroom in our new property. Our new fitted bedroom is perfect. County Kitchens & Bedrooms Worthing have now planned and due to install our new kitchen.

IT'S AS *simple* AS...

1 2 3 4 5

Kitchen Wishlist

The Wishlist

As part of the initial design consultation with one of our Designers we use the Sigma 3 Wish list to determine some of the details about what will make your new kitchen special for you. It helps us to get to know you better and the better we know you the better we can design your kitchen for your needs. Why not have a go at filling it out and bring it with you when you visit us in your local Sigma 3 store.



The Measure

You can bring your dimensions into us but we always like to promote the importance of a home measure. It allows us to technically measure and make sure we know every detail of your room space, including lighting and size. This is important as it takes the pressure off you and ensures that your dream kitchen will fit perfectly.



The Presentation

We can take your measurements and plan your dream kitchen. We ask you to revisit the store as it gives us the opportunity to discuss, amend and develop ideas with you. You can touch and feel samples and make sure your kitchen is in fact, your dream kitchen.



The Installation

You will have a dedicated installation manager who is based in your showroom. They will oversee your project from plan to completion. A technical survey allows the installation manager to double check our dimensions are perfect, ready for your dream kitchen. We do offer our kitchen on a supply only basis, but we always like to recommend our fitters.



The Sign Off

The final stage of your Sigma 3 kitchen is when the installation manager revisits you to check that the installation has gone smoothly and more importantly, to check that you are happy.



10 year warranty

All Sigma 3 Kitchens carry a warranty to provide you with complete peace of mind. The cabinets carry a 10 year warranty; there is a lifetime warranty on hinges and drawers, while the frontages, decor panels and wirework carry a 3 year warranty.

Visit sigma3.co.uk to find out more or to find your local showroom.



THE SHOWROOMS

Abergavenny
37 Frogmore Street,
Abergavenny,
NP7 5AN
01873 850 911

Cardiff East
The Design Quarter,
4 Colchester Avenue,
Cardiff, CF23 9XE
02920 485 888

Cardiff West
485 Cowbridge Road
West, Cardiff,
CF5 5TG
02920 593 969

Esher
86-90 High Street,
Esher, KT10 9QJ
01372 467 464

Newport
126 Lower Dock
Street, Newport,
NP20 1EG
01633 252 187

Swansea
2 Mannesmann Close,
Llansamlet Enterprise
Park, Swansea, SA7 9AH
01792 790 088

Warton
263-265 Lytham Road,
Warton, Preston
PR4 1AY
01772 631316

Worthing
28 Portland Road,
Worthing, West Sussex,
BN11 1QN
01903 201 901

We are committed to making your kitchen or bedroom experience as enjoyable as possible.

98%
of our customers
RECOMMEND
our designers

96%
of our customers
RECOMMEND
our installation teams

 **TRUSTPILOT**

9.8 out of 10