

MAGAZINE

JANUARY 2020

**THE BIG
WINTER
SALE**

Room to Move

A palette of beautiful blue, polished chrome, greys and clean whites create a beautiful base for this dream kitchen



5 PAGES OF
DELICIOUS
RECIPES

The Big Winter Sale
Make great savings!

Freestanding islands
Our favourite design features

Find your dream kitchen
Suit your kitchen to your lifestyle

Delicious Recipes
Cook up a storm!

UP TO
20%* OFF
KITCHENS & BEDROOMS



**Over 40 years of
British heritage**



Proudly Manufacturing Great British Kitchens.

We've been around for quite a while making great kitchens. Our roots go back to 1975 when we first started making kitchen furniture for friends and family and now we have a 70,000 sq ft factory near Cardiff that we call home.



Visit [sigma3.co.uk](https://www.sigma3.co.uk) to find out more or to find your local showroom.

Abergavenny 01873 850911 | Cardiff East 02920 485888 | Cardiff West 02920 593969 | Esher 01372 467464
Newport 01633 252187 | Swansea 01792 790088 | Warton 01772 631316 | Worthing 01903 201901

Hello & Welcome

After the buzz of Christmas, it's time to start the new year with a clutter free kitchen and a tranquil bedroom space.

We take a look at some of the top trends currently surrounding kitchen design in **The Lust List** on page 10. In **Sleek Storage**, on page 18, we speak to Lisa who absolutely loves her Scandinavian inspired H Line kitchen using rich tones and warm woods.

Create some new year treats with **The Neff Recipe Collection** on page 43. Perfect for cosy nights in!

Finally, if your bedroom is struggling for space then **Organise Your Perfect Fitted Bedrooms** on page 50.

Enjoy the issue!





10.



18 Storage Perfection

In this issue...

- 04 **The Big Winter Sale**
Our winter sale is now on.
- 08 **Your Next Steps to A Dream Kitchen or Bedroom**
Find out the exciting next steps.
- 10 **The Lust List**
The latest must-have furniture, design features and accessories.
- 14 **The Rise of Freestanding Islands**
Consider a freestanding island for your new kitchen.
- 18 **Sleek Storage That Looks Bespoke**
A beautiful, modern real kitchen case study.
- 24 **Light Entertainment**
A space that is truly the heart of the home.
- 32 **How To Choose Your Perfect Kitchen**
What's the best kitchen style for your lifestyle?
- 34 **Embrace Colour**
Enrich your world with colour pops in your design.
- 36 **Classic Design, Stylish Twists**
A classic feel with beautiful detailing.
- 38 **Real Kitchens**
Showcasing some of our favourite kitchen designs.
- 40 **Our Customers Love Us!**
We are so proud of our 4.9 out of 5 Trustpilot score.
- 43 **The Neff Recipe Collection**
Impress your friends and cook up a storm with our delicious recipes.
- 50 **Organise Your Fitted Bedroom**
Make the most out of your bedroom space with our tips.
- 54 **Real Bedrooms**
Showcasing some of our favourite kitchen designs.



UP TO
20%* OFF
KITCHENS

THE BIG **WINTER SALE** IS NOW ON!

You have more chance to make great savings in The Big Winter Sale. With amazing offers across our kitchens and fitted bedrooms, along with great savings to be made on appliances, worktops, sinks and taps.

We've been creating dream kitchens and bedrooms since 1975. Our expert designers are here to help every step of the way, they have the knowledge to help make your dream a reality. Getting in touch is easy, to order a brochure or book a design appointment, simply visit; sigma3.co.uk/sale



*Terms & Conditions apply. While stocks last. Please ask in store for details.

THE BIG WINTER SALE

Finding your dream kitchen or bedroom is easy!

Book a free design appointment with one of our expert designers and find out how they can help you find your dream kitchen or bedroom.



Book now at sigma3.co.uk/sale

UP TO
20%* OFF
BEDROOMS



*Terms & Conditions apply. While stocks last. Please ask in store for details.

20%* OFF
SELECTED
APPLIANCES



SOLID
SURFACE
WORKTOP
OFFERS*



BUY NOW
PAY LATER

Spread the cost of your dream kitchen or bedroom

There is no need to wait with our flexible
finance options! **Buy your kitchen or
bedroom now and pay nothing for 12
months!***

It really is as simple as that.

*Pay in full after 12 months, and pay a £29 admin fee.

19.9% Representative APR, if the balance is not paid in full.

*Terms & Conditions apply. Please ask in store for details. Credit is subject to status and affordability. Terms and conditions apply. Sigma 3 Kitchens Ltd, Llantrisant Business Park, Llantrisant, South Wales, CF72 8LF, FRN: 702623 is a credit broker and is authorised and regulated by the Financial Conduct Authority. Credit is provided by a panel of lenders with whom we have a commercial relationships (so we cannot provide independent advice).

*Terms & Conditions apply. While stocks last. Please ask in store for details.

25%* OFF
SELECTED
SINKS & TAPS



10%* OFF
GLASS
SPLASHBACKS



*Terms & Conditions apply. While stocks last. Please ask in store for details.

Your next steps to a dream kitchen or bedroom.

We are offering you a FREE design package, **worth £500!**

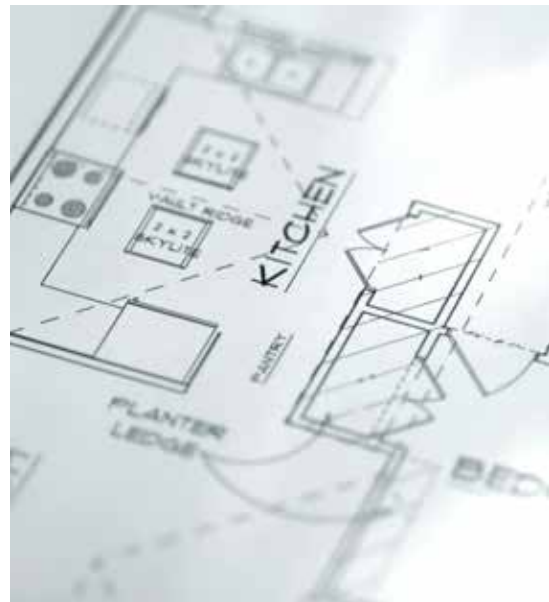
Our team of expert designers and installation managers will make your dream a reality. This will include creating your perfect kitchen from your wishlist, creating a 3D design and then a full quote.

Simply visit sigma3.co.uk/book-a-design-visit to book yours today.



1. Your wishlist

Tell us about your dream kitchen or bedroom and your current budget. Bring in some of the images you have found as inspiration or simply ask us if you do not know where to start! We can then fill in your wishlist.



2. Your home measure

We like to promote the importance of a home measure because it allows us to technically measure every aspect of your space and understand any restrictions we may come across.



3. Your 3D plan and quote

We present your dream space to you after including all the items from your wishlist and ensuring we maximise the space we have available. We can discuss, amend and develop ideas with you and you can also touch and feel the samples to make sure your space is your dream space.

4. Your installation survey

Once you place your kitchen or bedroom order, you will be assigned an installation manager who will oversee the project from plan to completion. A technical survey ensures that every measurement is double checked and will fit perfectly into your space.



5. Your installation

Our expert fitters have worked with Sigma 3 for over 40 years (almost as long as the company has been established!). This means they know our products inside and out, so you can rest assured that your installation will be in safe hands.



6. Your sign off

Your dedicated installation manager will revisit your space and check that the installation has gone smoothly and more importantly, check that you are completely happy!

LINEA



Left: Linea Bi-Fold Wall cabinets. Right: Linea Lift Up Wall cabinets

The *LUST* List

Key design features, colour inspiration and iconic items to enhance your brand new kitchen scheme.

LINEA



SUPER SLEEK STORAGE

Available up to 2 meters wide, Linea base and lift up wall cabinets allow you to create an individual stand out modern design within your kitchen. Shown above in Sutton Light Grey

LINEAPLUS



MAXIMISE YOUR SPACE

LineaPlus are not only the widest but also the deepest drawers on the market - they open to 650mm deep, that's 200mm more than a standard drawer! Exclusive to Masterclass Kitchens. Available in Legrabox R-Design only.

The
Hathaway



THE SIGNATURE LIFESTYLE

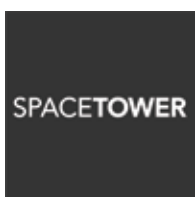
The Signature Collection is much more than a range of highly desirable and iconic storage features. It is a lifestyle choice, committed to giving you the best possible experience when selecting what goes into your new kitchen. Shown above, The Hathaway in Portland Oak

THE POWERFUL PANTRY

A pantry is probably one of the first things that comes to mind when you mention 'dream kitchen storage'. It's certainly a show stopping piece and will fit in all your store cupboard essentials. The Hathaway is a quintessential storage feature that can be personalised to your needs. Available in 2 finishes and a slimline version to satisfy almost any space!



If space is at a premium then MagnaSpace offers a strong, versatile and flexible storage solution. With soft close as standard, MagnaSpace carries vastly more weight than alternative wirework options and will suit the most demanding of spaces. Available in 3 different finishes.



THE SPACETOWER

If you want the ultimate kitchen storage, then look no further than SpaceTower. One of the main benefits of SpaceTower is its easy access from every angle - you can reach each item with complete ease.

This attractive storage feature is available in a variation of widths and you can choose from 3 different finishes, meaning that SpaceTower will suit anyone's interior styles.





The
Lansbury

The Lansbury in Portland Oak



The Lansbury in Tuscan Walnut

A twist on a classic pantry, The Lansbury is the perfect corner storage feature to create a walk in pantry when space is at a premium.



The
Connery

The Connery in Tuscan Walnut

COCKTAIL HOUR

The Connery evokes a sense of glamour and occasion. A timeless features and a jewel of the kitchen, this cocktail cabinet will always be a true classic.



VelaBin in Legradox R-Design

VELABIN

Make light work of your kitchen waste with VelaBin. Featuring an efficient carbon bio filter lid that prevents any unwanted odours from escaping. Available in 3 colour options to perfectly match your chosen drawer system.

The rise of freestanding islands

Opting for furniture that you can see underneath creates the illusion of a bigger space. Being able to see the floor space beneath your cabinetry allows a continuous flow and creates a clean, seamless look.

Hampton Freestanding Island in Farringdon Grey





Hardwick Freestanding Island in Oxford Blue



Solva Prep Island in Scots Grey

"There's no surprise, due to the popularity of open plan living, that freestanding islands are becoming increasingly popular."





Marlborough Mulberry Freestanding Table Island

FURNITURE OVER CABINETS

Move away from the typical 'fitted kitchen' look by opting for a freestanding island. Using kitchen furniture ensures that the space is still functional and usable while keeping the design on trend.



Hardwick Freestanding Island in Highland Stone



Sherborne Freestanding Island in Mulberry



Solva Freestanding Island in Vintage Rose

AS SEEN IN

GoodHomes
magazine

'OUR SLEEK STORAGE LOOKS BESPOKE'

Unable to extend, Lisa has carved out a chic kitchen-diner within her bungalow's original footprint.

Range: **H Line Sutton Graphite** | Designer: **Lisa Foggan** at **Cardiff East**
Photography: Paul Craig

WHY DID YOU DISLIKE YOUR OLD KITCHEN?

Our original kitchen had limited storage and almost no workspace - it was a nightmare trying to prepare food! The room also felt very disconnected from the rest of the house, which was a real problem for us.

HOW DID YOU WANT TO CHANGE THE SPACE?

The kitchen needed to have larger presence in our home; to function and serve not only as a place to cook but also somewhere we could entertain our friends as well as our daughter, tackle homework, store crafts and books, and everything else in between. With that in mind, we reconfigured the downstairs layout to create a kitchen-diner that spanned the depth of the house.

WHAT WERE YOUR MUST-HAVE FEATURES?

We love the Scandinavian look with its clean lines, bold colours and warm timber. We knew we wanted handleless units and open shelving to add our personality to the space, with the all-important accents of wood included, Corian worktops and a moulded sink were also top of my list - as seamless joints are so easy to clean - plus an island with breakfast bar seating.

WERE THERE ANY DISASTERS ALONG THE WAY?

We originally planned a rear extension, so had very different ideas for the ground floor and kitchen. Unfortunately, the cost made this unfeasible, which is why we decided to reconfigure the ground floor within the existing footprint of our home.

HOW DO YOU FEEL NOW THAT IT'S ALL FINISHED?

Our new kitchen-diner has changed the way we live - we spend so much more time together as a family now. Our daughter often sits at the breakfast bar while we prepare dinner, and the conversation flows far more easily in an open-plan space than shouting through corridors! What's really surprised me is how layering lighting can transform the function of an open-plan space; we can illuminate different areas depending on what we're doing, and it changes the atmosphere completely.



Beautiful open wine racks in Portland Oak on top of the Graphite cabinetry works perfectly.







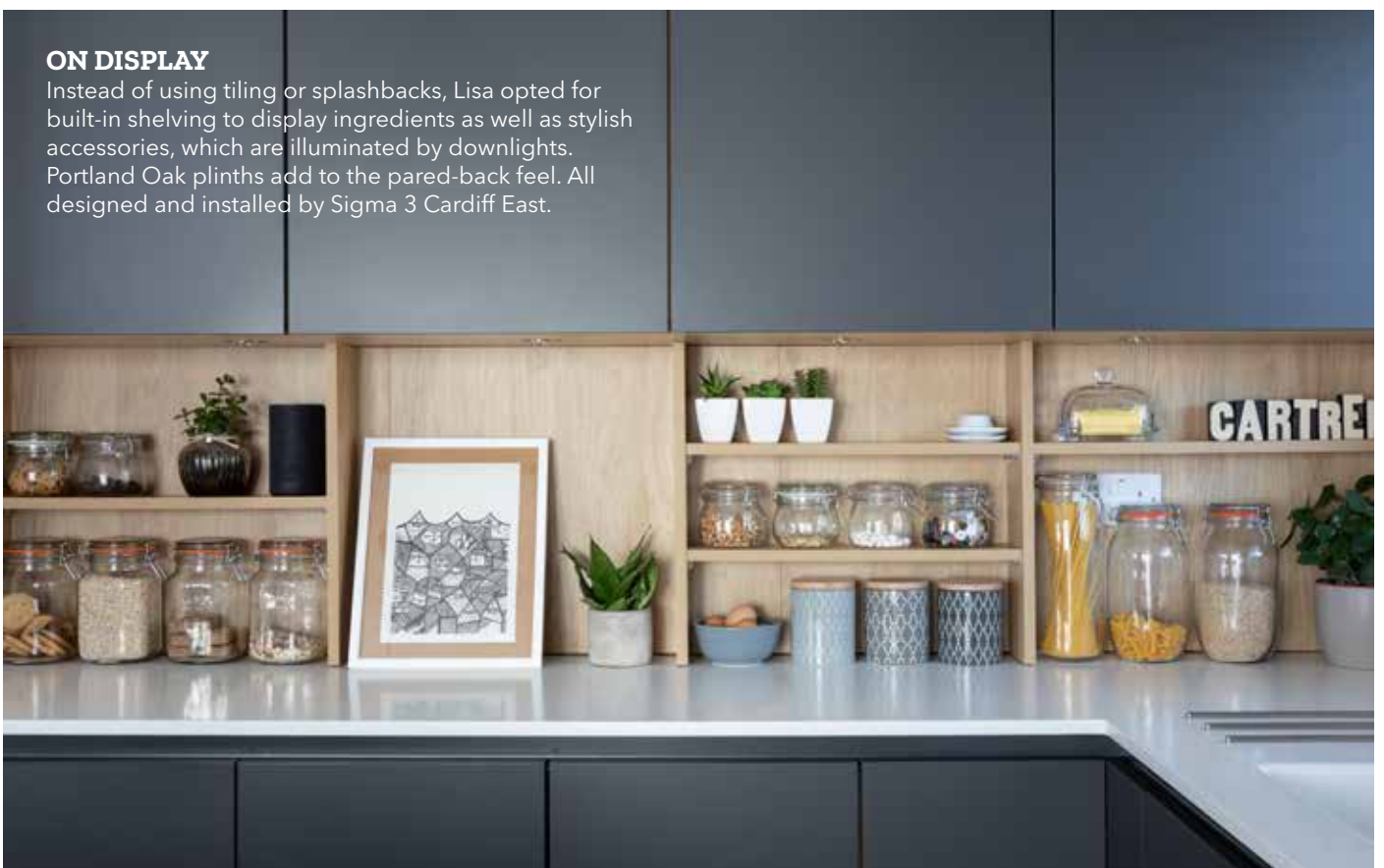
ORGANISATION IS KEY

Being organised makes the whole experience far more enjoyable! Not having to make decisions under pressure gives you a far more restful night's sleep!



ON DISPLAY

Instead of using tiling or splashbacks, Lisa opted for built-in shelving to display ingredients as well as stylish accessories, which are illuminated by downlights. Portland Oak plinths add to the pared-back feel. All designed and installed by Sigma 3 Cardiff East.





GET THE LOOK



GET THE LOOK

1. H Line Sutton Graphite and Portland Oak from Sigma 3 Kitchens | 2. Grey Geometric Ceramic Tea Coffee Sugar Jar Canisters Scatty Squirrel £16.99 | 3. Lattad place mat Ikea £3.50 | 4. Fuji Paddle chopping board Habitat £25.00 | 5. Dualit Dome Kettle John Lewis £85.00 | 6. Oslo Oak Bar Stool Atlantic Shopping £79.99 | 7. Artisan Serving Bowls The White Company £40.00





AS SEEN IN

essential
KITCHEN
BATHROOM BEDROOM



Light **entertainment**

Understated colour, texture and form created a bright and welcoming kitchen all year round in this new-build home.

Range: **Sherborne Windsor Blue with Light Grey and Portland Oak cabinetry**
Photography: Paul Craig





For the owners of this beautiful kitchen, designing a new home was an exciting challenge. It also presented the ideal opportunity to create a dream space to suit their family and lifestyle. 'It took around a year to build our new home where we live now with our two children. Having a clear idea about what we wanted to achieve kept the design and build process running smoothly.' The owners wanted to keep their new kitchen contemporary, clean and functional. In order to channel a fresh and modern feel, the cabinet and surface colours were kept crisp and punchy. The Sherborne range in Light Grey and Windsor Blue was chosen with other subtle features that added layers to the scheme. Ergonomic storage was key for this kitchen design, with a dedicated pantry area for food and carefully crafted wine rack frees up worktop space and makes every surface feel calm.

ROOM TO MOVE

The owners love their pantry cupboard, which provides ample storage and allows for a separate 'coffee area' without overcrowding the worktops.



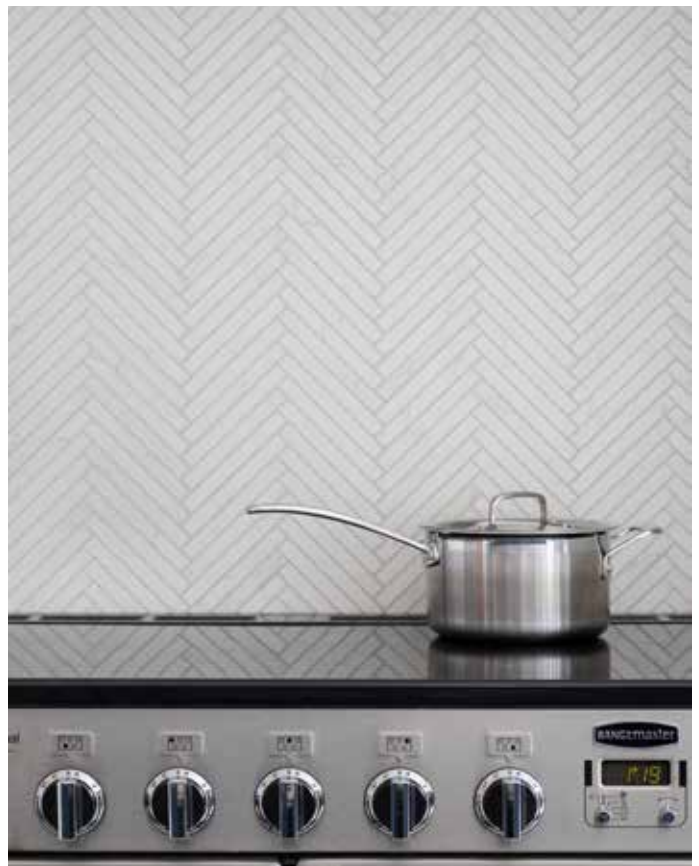
SILVER STYLING

A palette of polished chrome, grey and clean whites create a beautiful base for this kitchen.



Kitchen Profile

Sherborne painted wood grained doors in Windsor Blue and Light Grey with Portland Oak cabinetry. Hexagon bar handles and a Quartz worktop.







GET THE LOOK



GET THE LOOK

1. Sherborne Windsor Blue, Light Grey and Portland Oak cabinetry from Sigma 3 Kitchens | 2. Cutter 1-Light Cone Pendant Wayfair £49.99 | 3. Palladio Marble Herringbone Mosaic Ca'Pietra £14.76 per sheet | 4. Form Stainless Steel Bar Stool Danetti £159.00 | Chandler Antique Brass Wall Clock Artisaniti £80.00 | Black Toast Large Handled Tin Tray Emma Bridgewater £33.00

How To Choose The Perfect Kitchen Style

How do you find the right kitchen to suit your needs? You may lead a busy lifestyle with a young family or, alternatively, you may find solace in having a peaceful, calm kitchen and living space. We have put together some key questions to ask yourselves before beginning your brand new kitchen journey.



About your property

With the increase in popularity of open plan living, people are opting for extensions or remodelling before undertaking their kitchen journey. Here are a few points to meet the criteria of Permitted Development rights, you can get further advice from your local planning office:

- The extension must not use more than half the area of the land around the original house and other buildings
- It can't be higher than the highest part of the roof
- A single storey extension can't be more than 4 metres high
- A two-storey extension can't extend more than 3 metres beyond the rear wall of the original house
- Side extensions must be single storey, with a maximum height of 4 metres and a width no more than half the width of your house
- The materials used must be similar to those used on your existing house

It is also vital to consider some of the more practical points, such as:

Would plumbing or electrics need to be moved?

If the kitchen is going to be an open plan, multi functional space, then have you considered a utility room to house some of the noisy appliances, such as a washing machine and tumble dryer?



About your space

It is really important to consider how you want your kitchen space to be used and draw up a list of all the activities that are likely to take place. Think about how you currently use your kitchen:

What are your current likes and dislikes about your kitchen?

How do you visualise your new kitchen working for you?

Will the space be purely for practical tasks, such as cooking, or is it likely to be a place where friends and family can gather together too?

Will you require seating in your kitchen? (Whether it is on an island or would you require a dining table)

Consider layout options, such as:

Will you have a U/L shaped layout?

Do you want an island? (If you are short on floor space then consider a peninsular)



About your style

Choosing a kitchen to suit your style and lifestyle is a decision not to be taken lightly. With over 270 different door options and 40 colours, there is always an option to accommodate any taste.

Do you want to achieve a Modern or Classic look?

Have you thought about a colour scheme? Do you want to incorporate a bold door colour?

Do you want to mix and match door finishes and colours?

Are you likely to include statement splashbacks, walls or tiles in your scheme? This could determine a door colour or finish you may have already chosen.

Do you want to include clever storage features from 'The Signature Collection'?

Does your colour scheme need to flow from kitchen to living space?

Have you considered freestanding furniture from 'The Living Collection' to transition between kitchen and living spaces?

The next steps

Once you have taken the time to consider the questions in this section, it would be a great idea to visit your nearest Sigma 3 showroom to discuss your project further. They have a wealth of knowledge and may be able to help you with some of the more difficult questions you have come across.

To book your free design appointment with your nearest retailer, visit sigma3.co.uk/book-a-design-visit and start your journey to your perfect kitchen today.





EMBRACE COLOUR

There's no escaping the shift towards the use of vibrant and bold colours in interior design, with colour-blocking becoming a big trend throughout the home.

Hardwick Wisteria

1 INJECT COLOUR

Introducing vibrant colours can be a powerful way of updating a kitchen, injecting a sense of character for autumn or adding some cheer ahead of the spring sunshine.

2 THE RIGHT BALANCE

Introducing colour into your kitchen scheme can be a daunting task. What looks striking in a showroom setting, may quickly become overpowering in real life, so achieving the right balance is key.

3 COLOUR BLOCKING

Colour blocking is an effective way of introducing your favourite shade into your home.

4 BRIGHT ALTERNATIVES

If your base colour is quite dark, consider a bright alternative to block with, as this will lift the whole space.

5 BOLD COLOURS

Highlight bold colours in an area such as an island or run of furniture along a back wall. This creates a focal point in the room, highlighting and drawing the eye to key areas.



Ashbourne Mulberry

TOP RIGHT
H Line Sutton Inkwell with Farringdon Grey

MIDDLE RIGHT
Marlborough Hunter Green

RIGHT
Solva Vintage Rose with Graphite



CLASSIC DESIGN

stylish twists

A sprinkling of classic design mixed with modern twists creates a fresh take on a kitchen scheme.

Hardwick Farringdon Grey

1 SOPHISTICATED COLOUR

A grey-toned, sophisticated palette can be warmed up with splashes of Oak and Walnut.

2 STACK THEM HIGH

Stacking varying height wall units means that you can create a more classical feel in your kitchen scheme.

3 SILKY SMOOTH

Choosing a range that has a Silk finish means that you can create clean, crisp lines in a modern finish.

4 IT IS ALL IN THE DETAIL

Adding features such as glass cabinetry can give your scheme a more classic feel. Choose to add the Inframe System to give your kitchen a classic look.



Choose to add the Inframe System to give your kitchen a classic look.



TOP RIGHT
Shelford Highland Stone with Portland Oak

MIDDLE RIGHT
Hardwick Lava with Highland Stone

RIGHT
Solva Natural Oak with Farringdon Grey

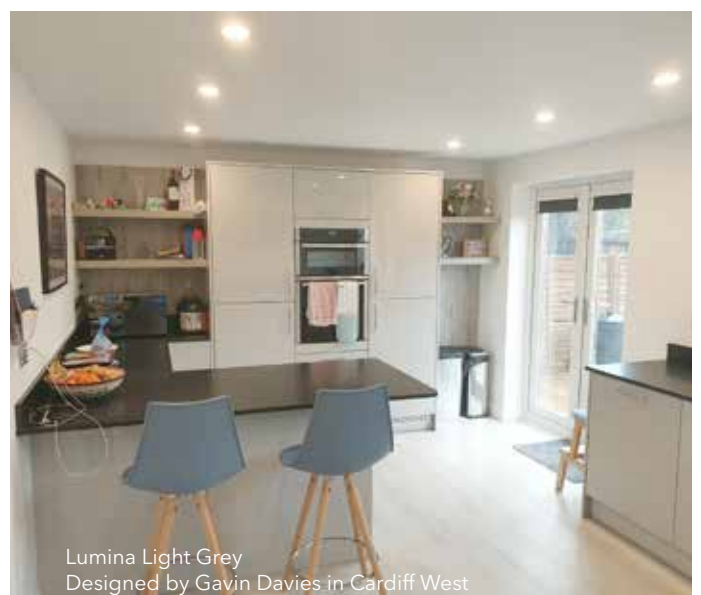


H Line Sutton Graphite
Designed by Phil Rose in Esher

REAL KITCHENS

Our real kitchens speak for themselves. They are designed and installed by our team of highly qualified designers and fitters. Our wealth of knowledge helps to make your dream a shining reality.

sigma3.co.uk/realkitchens



Lumina Light Grey
Designed by Gavin Davies in Cardiff West



Chadwick Graphite
Designed by Emma Randall in
Abergavenny



Lumina Light Grey with Graphite
Designed by Dave Davies in Newport



H Line Lumina Light Grey
Designed by Tom Warzycha in Swansea



H Line Larna Graphite
Designed by Dave Campbell in Warton



Marlborough Scots Grey
Designed by Antony Riley in Worthing



Carnegie Lava with Farrington Grey
Designed by Alice Vaatstra in Cardiff East

OUR CUSTOMERS LOVE US!



TRUSTSCORE 4.9 OUT OF 5



A stunningly brilliant kitchen

Chris's Review

"We are very pleased with the entire Sigma 3 experience. Everyone has been incredibly helpful, right through from Beth, the designer, Edward the surveyor, and Peter, the installer. The finished job is everything we hoped for and we would heartily recommend this company to anyone considering a new kitchen."



Delighted with our Sigma 3 Kitchen

Leigh's Review

"Delighted with our Sigma Kitchen and all of the support and reassurance we had through our project. We would highly recommend, friendly, and know what they are doing."



Outstanding kitchen and customer service

Rhian's Review

"I highly recommend Sigma 3. I am absolutely delighted with the service we received from Sigma 3. The level of customer service we received from Alice Vaatstra our kitchen designer was outstanding which is reflected in the fabulous look and feel of the kitchen. I smile every time I am in the kitchen and feel as though we should be featured in a magazine!!!

Alice listened to our ideas and lifestyle needs throughout the process, sharing suggestions and amendments along the way. We were undertaking a complete re-build of our home, the design, delivery and kitchen fit team also worked seamlessly with our building team. Thanks all from a very very happy customer!"



Happy just sitting in my new Sigma 3 kitchen

Deborah's Review

"I spend a lot of time in my kitchen so wanted to finally have it the way I wanted. I chose Sigma 3 Kitchens through personal recommendations from a number of my neighbours who have updated or refreshed their kitchens over the years.

The quality of the products and the services provided were the most professional I have ever known. The Designer, Project Manager, Building team and Kitchen fitters worked together like clockwork and I have a space that makes me very happy.

The after care customer service is second to none. I wouldn't hesitate to recommend them to anyone."



We cannot praise Sigma 3 enough

LindaB's Review



Great service from start to finish

Ms Whittaker's Review

"Great service from start to finish. We have the kitchen we wanted!"

OUR CUSTOMERS LOVE US!



Why you should choose Sigma 3

Jo's Review

"Our new Sigma 3 kitchen was recently installed and we are absolutely delighted, not only with the final product, but with the whole process. Martyn Harris is a great designer and came up with lots of interesting ideas, and combined with his outstanding knowledge and experience in the field, we have a superb kitchen and snug with built in seating. It's clear that at Sigma 3, everyone aims for the highest standards, and

we were impressed at the care that our fitter, Denver, took to ensure everything was perfect. It's rare in my experience to come across a company that doesn't just talk about customer care, but they prove it at every stage of the process. Nothing was too much trouble, and no concern too small to be addressed. Just outstanding!"



Nothing Less than First-Class

Mr & Mrs Hay's Review

"A big thank you to Sigma 3 staff at the Cardiff Colchester Avenue office, for transforming our kitchen and conservatory from two separate rooms into one fabulous open plan living area. The difference is truly amazing. The white high gloss units combined with the grey wood panels and shelving looks superb.

We are indebted to Lisa, for designing the new kitchen and for her expert eye for detail, Chris the fitter for putting the units and appliances in place, and Jamie the Installation Manager for co-ordinating the different stages. They were brilliant.

Whilst the quality of the product speaks for itself, Sigma 3 provide a very professional and friendly personal service. This is a company that really cares and takes great pride in everything they do.

We would not hesitate in recommending Sigma 3."



Excellent

G. Lissenberg's Review

"Designers Listen to your needs, excellent service, great quality kitchen."



Amazing service from a great team

Les's Review

"Amazing service from a great team and we now have our fantastic Kitchen. From design stage (Inspirational layout) to building work, tiling, fitting and decorating and all the follow up queries and questions we had. Thank you all at Sigma 3 Newport"



From the initial meeting to completion

Mr & Mrs C - Sussex's Review

"Superb in every way! From the initial meeting to completion of the job we have been impressed by the service, knowledge and helpfulness of all of the staff. I could not rate this company highly enough."



Great experience from start to finish

Lisa's Review

QUALITY, SERVICE and VALUE

We've been making kitchens for over 44 years now and built a reputation for the quality of our kitchens and our installations. You can rest assured when you buy a Sigma 3 kitchen.



Affordable Kitchens

Kitchens to suit every budget



Choice

Over 400 doors and 11 different cabinet options to choose from



98%

of our customers

RECOMMEND

our designers



Expert Designers

Recommended by 98% of customers

96%

of our customers

RECOMMEND

our installation teams



Experienced Installation

Recommended by 96% of customers



Beautiful Showrooms

Eight Kitchen and Bedroom showrooms



One Kitchen to Love

We hope you have many years of enjoyment out of your Sigma 3 Kitchen



Visit sigma3.co.uk to find out more or to find your local showroom.

Abergavenny 01873 850911 | Cardiff East 02920 485888 | Cardiff West 02920 593969 | Esher 01372 467464
Newport 01633 252187 | Swansea 01792 790088 | Warton 01772 631316 | Worthing 01903 201901



COOKING PASSION SINCE 1877

THE NEFF RECIPE COLLECTION





Makes: 1 loaf

WHOLE-WHEAT OATS AND SEED SODA BREAD

A wholesome breakfast bread that doesn't need any proving. You can have it on the table (with plenty of butter and jam!) in less than an hour. Using the NEFF Home Connect VarioSteam oven means you can even ask the oven to pre-heat whilst you start on the recipe.



INGREDIENTS:

200g whole-wheat flour
250g plain flour
60g oats
75g seed mix
1 tsp bicarbonate of soda
1 tsp sugar
1 tsp salt
450ml buttermilk
1 small egg, lightly whisked

INSTRUCTIONS:

1. Preheat the oven to Circotherm 180C. Line a baking tray with baking parchment.
2. Place the two flours, all but 1 tbsp of the oats, all but 1 tbsp of the seeds, the bicarbonate of soda, sugar and the salt in a large bowl and mix together.
3. Pour in two-thirds of the buttermilk and mix using your hands. Add more buttermilk until the mixture comes together without being sticky.
4. Place on a floured surface and shape the dough into a ball.
5. Transfer the dough to the prepared baking tray and flatten slightly. Use a sharp knife to cut a cross into the top of the bread.
6. Brush the top of the dough with the egg wash.
7. Sprinkle on the reserved oats and seeds, pushing them in slightly. Place in the oven. Add low steam and cook for 40-45 minutes until golden brown and hollow underneath when tapped.
8. Remove from the oven and allow to cool on a cooling rack for 10 minutes (or until completely cool), then slice and serve with butter.





Serves: 4

CAJUN CRUSTED COD WITH SPICED GARLIC POTATOES

Using the timer with voice control couldn't be easier – just ask Alexa to set the timer whilst you get on with the rest of dinner. This Cajun crusted cod with garlic potatoes is all cooked in the oven, taking advantage of the timer setting to add in elements of the dish to the oven at the correct time.



INGREDIENTS:

Spiced garlic potatoes:

500g baby new potatoes, sliced in half
2 tbsp olive oil
½ tsp salt
½ tsp black pepper
½ tsp paprika
¼ tsp chilli flakes
2 cloves garlic, minced

Cajun crusted cod + tomatoes:

4 cod fillets
2 tbsp Cajun spice mix
200g cherry tomatoes, on the vine
Good pinch of salt and pepper
2 tbsp olive oil

To serve:

2 tbsp chopped fresh coriander
2 tbsp chopped fresh parsley
Lime wedges
Green salad

INSTRUCTIONS:

1. Preheat the oven to CircoRoast 220C. Place the potatoes on a lined baking tray. Drizzle on the oil and sprinkle on the salt, pepper, paprika and chilli flakes. Toss together.
2. Place in the oven on level 3 and set the timer using Alexa voice command for 20 minutes.
3. Meanwhile, place the cod fillets on a second lined baking tray and sprinkle with the Cajun spice.
4. Arrange the cherry tomatoes on the same tray. Sprinkle the cod and tomatoes with the salt and pepper and drizzle with the olive oil.
5. When the timer beeps, take the potatoes out of the oven and add the garlic. Toss together and place the tray with the potatoes back in the oven on level 1.
6. Place the tray with the cod and tomatoes in the oven on level 3 and add medium steam.
7. Set the timer using Alexa voice command for 10 minutes. After 10 minutes, check the fish and potatoes are cooked (give another couple of minutes if needed) and remove from the oven.
8. Serve topped with chopped coriander and parsley, along with lime wedges and a fresh green salad.





Serves: 2

OVEN BAKED KOREAN PORK CHOPS

Dinner is five minutes from being ready when you receive a phone call to say that someone is running late. But dinner doesn't have to be ruined.

With the help of Home Connect, you can ask the oven to reduce the heat and turn on the steam to stop dinner drying out – without setting foot in the kitchen.



INGREDIENTS:

4 pork chops
50g Korean gochujang paste
1 tbsp rice wine vinegar
1 tbsp light brown sugar
1 ½ tbsp soy sauce
1 tbsp mirin
1 thumb-sized piece ginger
peeled and minced/grated
1 clove garlic peeled
and minced
1 tbsp sesame oil

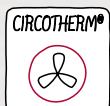
INSTRUCTIONS:

1. In a large bowl, place the gochujang paste, rice wine vinegar, sugar, soy sauce, mirin, ginger, garlic and sesame oil. Mix together, add the pork chops and stir again to coat. Cover the bowl with clingfilm. Place in the fridge to marinate for 1-2 hours (up to overnight).
2. Preheat the oven to CircoTherm 190C.
3. Take the pork chops out of the fridge and arrange on a baking tray. Place in the oven to cook for 15-20 minutes – until cooked throughout.
4. Remove from the oven and sprinkle with the black sesame seeds and shichimi togarashi. Serve with a green salad.

Someone running late?

If the chops are already cooking in the oven, cook for 10 minutes, then ask the oven to turn down to 90C with low added steam. They can stay in the oven like this for a further 15-20 minutes.

If the chops are cooked, turn off the oven and open door for 5 minutes to release heat. Close the door, then around. 15 minutes before required, ask the oven to heat to CircoTherm 190C with medium added steam for 10-12 minutes. Note: don't leave the pork chops in the oven like this for more than 30 minutes. If it's likely to be longer, remove them when cooked. Cool quickly, cover and refrigerate (for up to a day). Place back in the oven, uncovered, at CircoTherm 190C with medium added steam for 10-12 minutes until piping hot throughout.





COOKING PASSION SINCE 1877



Serves: 4

SAUSAGE TOMATO AND BUTTERBEAN HOTPOT

You've just picked up the kids from school and they've informed you that they're literally starving.

Using Neff Home Connect, you can have the oven on, warming up dinner before you've even taken your coats off. Prepare this filling and tasty sausage, tomato and butterbean hotpot ahead, and heat up in the oven ready for a speedy dinner.

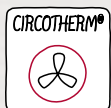


INGREDIENTS:

8 good quality pork sausages
1 ½ tbsp olive oil
1 small red onion peeled and finely chopped
1 red pepper, deseeded and finely chopped
75g chorizo sausage, chopped into small chunks
2 cloves garlic peeled and minced
1 tsp paprika
½ tsp dried thyme
2 tbsp tomato puree
100ml chicken stock
2 x 400g tins of chopped tomatoes
400g tin butterbeans, drained and rinsed

INSTRUCTIONS:

1. Preheat the oven to CircoRoast 220C.
2. Place the sausages in a large shallow baking dish and place in the oven for 20 minutes.
3. After 20 minutes, drizzle on the oil, add the onion, red peppers, chorizo and garlic and stir everything together. Cook for a further 10 minutes.
4. Add the paprika, thyme, tomato puree, stock and chopped tomatoes. Stir together and place back in the oven for 10 minutes.
5. Take out of the oven and stir in the butterbeans. If making ahead, at this point allow the dish to cool, then cover and place in the refrigerator (for up to a day). If you're making it to eat straight away, place back in the oven to cook for a final 10 minutes, then serve.
6. To reheat, uncover and place in the oven. Ask Alexa to heat the oven to CircoTherm 180C. Cook for 25-30 minutes (includes 5 minutes for preheating time).
7. Sprinkle the hotpot with parsley and serve with crusty bread.





COOKING PASSION SINCE 1877

Serves: 4

BAKED BLACKBERRY RICE PUDDING

It's no fun having to leave the conversation at the dinner table to make a start on dessert. Starting dessert ahead of time and using the NEFF Home Connect Slide and Hide oven means you can ask the oven to start baking dessert from your seat. This is a comforting baked blackberry rice pudding made extra rich with the addition of condensed milk.

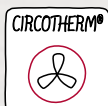


INGREDIENTS:

120g short-grain pudding rice
400ml whole milk
200ml water
1 tsp vanilla bean paste
250ml condensed milk
2 tbsp unsalted butter, chopped into small chunks
½ tsp ground cinnamon
300g blackberries
Small bunch of mint leaves

INSTRUCTIONS:

1. Grease a medium-sized baking dish with a little butter.
2. Rinse the rice with cold water. Place in a saucepan with the milk, water and vanilla bean paste. Bring to the boil, stir and simmer for 20 minutes. Turn off the heat and stir in the condensed milk and butter.
3. Transfer to the prepared baking dish. Sprinkle with cinnamon and two-thirds of the blackberries. Place in the oven until ready to bake (it can stay in there for up to an hour as it's cooling, but if it's more than an hour (or a few hours), cover and place in the fridge).
4. 30 minutes before you're ready to eat dessert, turn the oven on to CircoTherm 150C. Bake for 30 minutes (5 minutes of this will be pre-heating time).
5. Serve the rice pudding topped with the reserved fresh blackberries and a sprinkling of fresh mint leaves.



Neff MasterPartner®

We understand that the kitchen is the heart of every home, a place to meet, eat and get creative. Therefore, we can offer efficient, high quality products that meet the demands of every lifestyle.

As a Neff MasterPartner® you will benefit from exclusive Neff promotions, live cooking demonstrations, a premium display of Neff appliances and staff that have been fully trained on all Neff appliances to offer you the best possible service.



Ovens, Compact & Combi Ovens



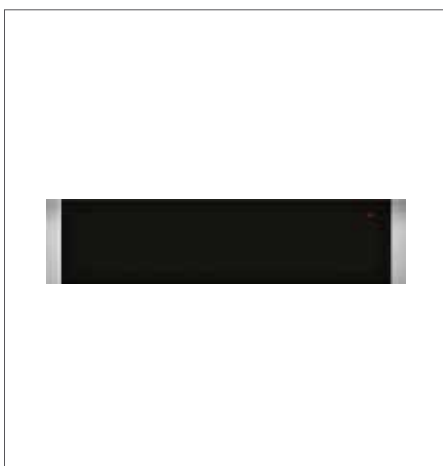
Hobs



Steam Ovens & Compact Steam Ovens



Warming Drawers



Fridge/Freezers



Dishwashers



Extractor Hoods



Laundry



Built-In Coffee Machines





DIVIDE AND CONQUER

Storage is the key to organisation and keeping your space calm and tranquil.

Organise your *Perfect Fitted Bedroom*

Sort out your beloved bedroom with these easy ways to conquer the clutter.



EVERYTHING IN ITS PLACE

Rather than piling everything into one cupboard and having to move items before you reach what you actually need, opt for a space that you can subdivide. This way you can make sure every item has a home.



DON'T FORGET YOUR ACCESSORIES

Accessories always need a perfect space to be stored safe and sound, so why not include some dividers to neatly display your favourites.





COLOUR TRICKS

Deep and dramatic shades and patterns can help to make your room feel spacious as long as you limit the scheme to a single colour in a range of tones.



SPACE-SAVING AND CHIC

Sliding doors are both space-saving and chic, they can blend into the background or take centre stage. Rather than plain glass, mirrored panels are a clever way to make the room look bigger and still keep a classic charm to the design.



DECLUTTER THE WINDOW

Increasing natural daylight is key when you want to give the illusion of space. Replacing curtains for blinds or shutters will also let in maximum daylight.

CORNER SOLUTIONS

Corners can be a tricky space but even more complicated in wardrobes. The best approach is to utilise as much space as you can; corner shelves allow you to do this quite simply. Use them to store suitcases, boxes or bed linen..



REAL BEDROOMS

View more of inspiration at:
sigma3.co.uk/real-bedrooms



Milton Ivory
Designed by Ceri Billington in Swansea



Panorama Coconut
Designed by Ceri Billington in Swansea



Bedroom fitting

Catrin's Review

"I have recently had a bedroom fitted with Sigma 3 in Swansea. I had shopped around before contacting Sigma, but I instantly felt the customer service that Shannon provided was far better and more personal than some of the more well known suppliers.

Shannon came up with a lovely design and was happy to alter things to suit our needs.

The whole process, from the initial meeting, the designing, the visit from the surveyor, John, and the fitting by Simon, was seamless.

I would highly recommend Sigma 3, and I will certainly consider them to complete work in the future"



Kingsbury White
Designed by Shannon Davies in Swansea



Milton White
Designed by Rai Venezia in Swansea



Lustro Frost
Designed by Sophia Galifou in Worthing



Harewood Aragon Oak
Designed by Emma Randall in Abergavenny



Lustro White
Designed by Dave Campbell in Warton



Kingsbury Light Grey
Designed by Michael Thomas in Swansea



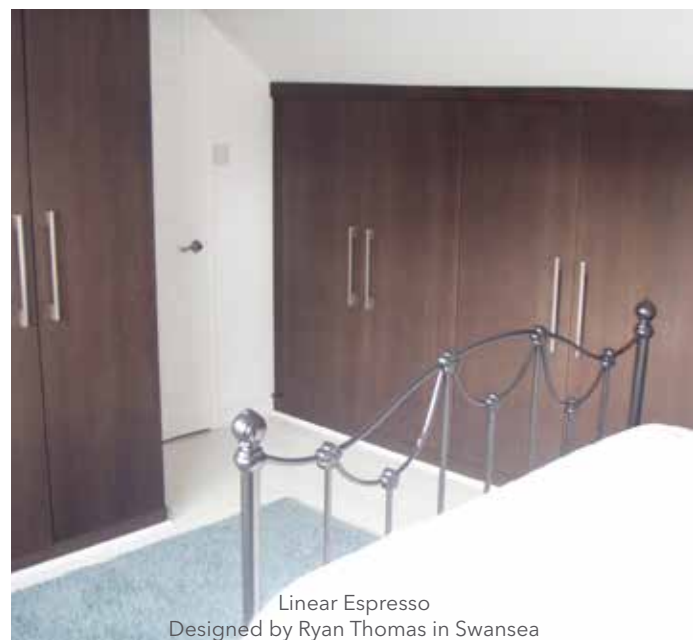
Fantastic

Maria's Review

"Fantastic service! My Mum recommended Sigma 3 after she had had a kitchen off them around 8 years ago. From start to finish, the process was easy, smooth and professional and the finished product is outstanding."



Lustro White
Designed by Rai Venezia in Swansea



Linear Espresso
Designed by Ryan Thomas in Swansea



THE BIG WINTER KITCHEN

SALE



Finding your dream kitchen or bedroom is easy!

Book a free design appointment with one of our expert designers and find out how they can help you find your dream kitchen or bedroom.



Book now at sigma3.co.uk/sale



THE BIG WINTER BEDROOM

SALE



Ask in store to find our current sale offers.

Book a free design appointment with one of our expert designers and find out how they can help you find your dream kitchen or bedroom.

Book now at sigma3.co.uk/sale



*Manufacturing Great British
Kitchens since 1975*



VISIT ONE OF OUR SHOWROOMS

Abergavenny Showroom
01873 850911

Newport Showroom
01633 252187

Cardiff (East) Showroom
02920 485888

Swansea Showroom
01792 790088

Cardiff (West) Showroom
02920 593969

Warton (Preston) Showroom
01772 631316

Esher Showroom
01372 467464

Worthing Showroom
01903 201901

Visit sigma3.co.uk to book a design appointment and meet a designer, book a home measure or order a brochure.

We can't wait to help you find your dream!